

b. Second Coinage Series - 1909

‘Snow Lion’ Type Design

This series of coins replaced the previous ‘Wheel Type’ in 1909. These coins introduced the symbolic standard of Tibet, namely, the ‘Snow Lion’, that has played such an important role in the issuing of coins up to the closing of mints by the Communist Chinese in 1953. It is a symbol of strength. The Snow Lion is found on the obverse. The reverses of this series show the ‘Wish-Granting Jewel’ (tib. ‘Norbu’). The ‘Snow Lion’ is also found on Tibetan stamps.

New denominations struck in copper replaced the former copper coins, which are the 2-1/2, 5 and 7-1/2 sKar issues. A new crown size coin, the Tam Srang, was minted in .980 fine silver.

All the coins were dated in the Tibetan cyclic dating system, namely, 15-43 or AD 1909.

The Code classification is noted below:

Code		Type	Year	Reference⁽¹⁾
‘T’				
14		2-1/2 sKar	15-43 (1909)	Y-10
15		5 sKar	15-43 (1909)	Y-A10
16		7-1/2 sKar	15-43 (1909)	Y-11
17		1 Tam Srang	15-43 (1909)	Y-12

⁽¹⁾ Krause-Mishler Catalog Number

T14 (Y-10)

2-1/2 sKar

The 2-1/2 sKar was popularly known as 'Khagang' (tib. Kha-gan. lit. 'a part'). The following seven tables detail the classification of this issue based upon five coins in the writer's trays.

LIST OF TABLES

- I. COIN FEATURE DETAILS
- II. COIN TYPES
- III. DETAILS OF THE COIN TYPES
- IV. SUMMARY DISTRIBUTION TABLE
- V. MEASUREMENT AND WEIGHT ANALYSES
- VI. X-RAY MINI QUANTITATIVE ANALYSES
- VII. TABLE SHOWING COIN DETAILS

A brief comment on these tables is given:

TABLE I describes the two Snow Lion types found. To aid in the classification, the sun variations are illustrated.

TABLE II classifies four coin types and these are detailed in **TABLE III** by photographic enlargements.

TABLE IV shows only one duplicate which would indicate this study is not complete and other types are expected to be discovered.

TABLE VI shows a mini quantitative analysis on four coins and shows no zinc contained in the coins.

TABLE VII records the coin details for the four types. Also the details of a counterfeit coin are given.

I. COIN FEATURE DETAILS

OBVERSE DETAILS

A. Snow Lion Types

<u>Code</u>	<u>Description</u>
A	Snow Lion looking backwards northeasterly about 25° above horizontal; thin body; no tongue; two teeth in mouth touching both jaws. The left front and rear legs are stiff and nearly parallel. The right front and rear legs only show the lion's paws. The tail extends slightly backwards from body before curling upwards.
B	Snow Lion looking northeasterly about 25° above horizontal; two teeth in mouth; body heavier than Lion 'A'; legs shorter; tail extends upward from body.

B. Sun Variations

<u>Code</u>	<u>Details</u>
-------------	----------------

1



2



3



C. Abbreviations

L.T..... Lion type
S.V..... Sun Variations

II. COIN TYPES

Type	Code 'T'	Obverse	
		Lion Type	Sun Type
I	14.1	A	1
II	14.2	A	3
III	14.3	B	3
IV	14.4	B	2

III. DETAILS OF COIN TYPES

Type I
Code T14.1
1.8 x enlargement, Mint: Dode
Denomination: 2-1/2 skar n.d. (1909)
Diam. 23.0 mm; Th. 1.3 mm; Wt. 4.18 gms
Metal: Copper, Plain edge



Obverse:A stylized snow lion (Type A) looking backwards within a 10-mm diameter circle. An ornate sun symbol (Type 1) above lion's back and a triangle form between the lion's legs. Lion's flames 0.2.0.5-9. The eight separate fleurets with Tibetan script inscribed between the two circles. The fleurets are connected by an arc with a bead below. Beaded border. Tibetan script reads:

Script dga'-ldan-pho-bran-phyod-las-ryam-rgyal. The Ga-den Palace, victorious in all directions.

Reverse:The 'Wish-Granting Jewel' (tib. 'Norbu') enclosed by two closely spaced circles with a 8.5-mm diameter inner circle. Between the second and third circles Tibetan script inscribed. Beaded border. Tibetan script reads:

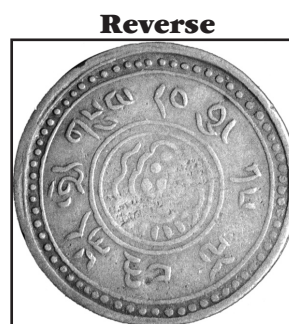
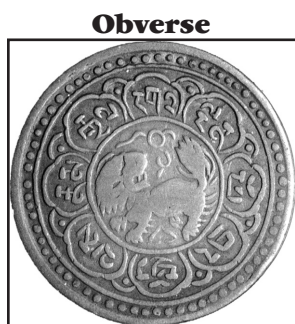
rab-byung-74-lo-C3-kar-phyed-gsum The 15th sexagenarian cycle, year 43, 2-1/2 skars

Type II
Code T14.2



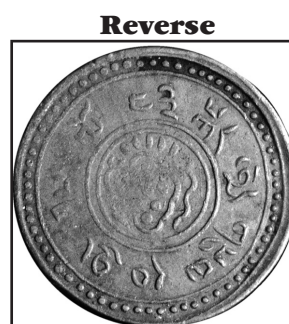
Obverse: Lion Type 'A' Lion's flames 0.3.0.4-8Sun Type '3'. **Reverse:** Deviating in Tibetan Script

Type III
Code T14.3



Obverse: Lion Type 'B' Lion's flames 3.0.3.4-7Sun Type '3'. **Reverse:** Deviating in Tibetan script

Type IV
Code T14.4



Obverse: Lion Type 'B' Lion's flames 2.0.3.5-7Sun Type '2'. **Reverse:** Deviating in Tibetan script

IV. SUMMARY DISTRIBUTION TABLE

Type	Code 'T'	No. Var.	No. Dup.	T.N.
I	14.1	1	-	1
II	14.2	1	1	2
III	14.3	1	-	1
IV	14.4	1	-	1
	Total	4	1	5

V. MEASUREMENT AND WEIGHT ANALYSIS

The average diameter is 23.2 mm and the average thickness is 1.23 mm. The average weight of four coins is 4.10 grams.

VI. X-RAY MINI QUANTITATIVE ANALYSES

Code 'T'	Analyses %				
	Cu	Zn	Fe	Pb	Sn
14.1	97.8	-	-	.253	-
14.2	98.0	-	-	-	-
14.3	97.1	-	.044	-	.307
14.4	97.3	-	.043	-	.196

VII. TABLE SHOWING COIN DETAILS

Type	Code 'T'	Coin Var	L.T.		S.V.		Obverse Lion				T	Rev Die Axis	Diam. mm	Th. mm	Wt. gms	Remarks
							Rt ft.	Lt ft.	Rt. rr.	Lt. rr.						
I	14.1	1	A		1		0	2	0	5	7	25°ccw	23.0	1.3	4.18	
II	14.2	2	A		3		0	3	0	4	8	15°ccw	23.2	1.3	4.37	
III	14.3	3	B		3		0	3	0	4	7	30°cw	23.2	1.0	3.53	
IV	14.4	4	B		2		0	3	0	5	7	20°cw	23.2	1.3	4.31	
	14.CF	CF	-		4		0	0	0	4	5	10°cw	22.9	1.3	-	Counterfeit