

T-11 (Y-B7)

1/4 Sho-gang

The classification of the 1/4 Sho-gang is based on a study of 18 coins in the writer's cabinet. This resulted in eight tables shown below.

LIST OF TABLES

- I. COIN FEATURE DETAILS**
- II. COIN TYPES**
- III. DETAILS OF COIN TYPES**
- IV. SUMMARY DISTRIBUTION TABLE**
- V. SUMMARY MEASUREMENT ANALYSIS**
- VI. SUMMARY WEIGHT ANALYSIS**
- VII. X-RAY MINI QUANTITATIVE ANALYSES**
- VIII. TABLE SHOWING COIN DETAILS**

TABLE I presents the data in classifying the three types.

TABLE II shows the details of the eight varieties.

TABLE III present photographic enlargements of eight variations. A detailed description for TYPE I is given while only brief notes are given for the other variations.

The collection shows eight variations and nine duplicates in TABLE IV. This would seem to indicate additional variations exist.

TABLE VI shows the average weight is 8.29 grams. A standard deviation of 0.54 would indicate a lack of control in minting techniques.

TABLE VII gives 13 x-ray mini quantitative analyses. The high copper content and the low zinc content confirms these coins are classified as copper coins.

TABLE VIII is the detailed data on which this study is based upon.

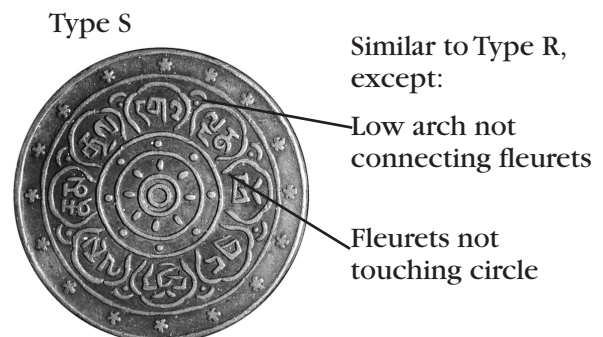
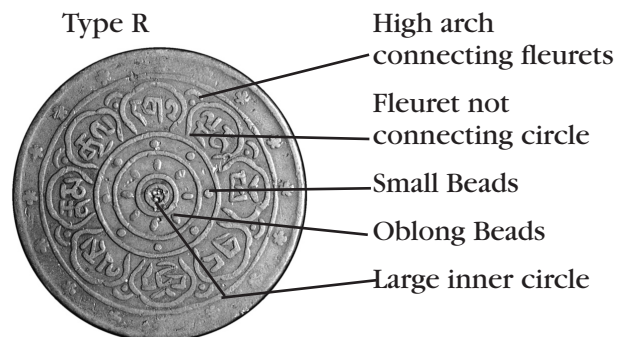
I. COIN FEATURE DETAILS

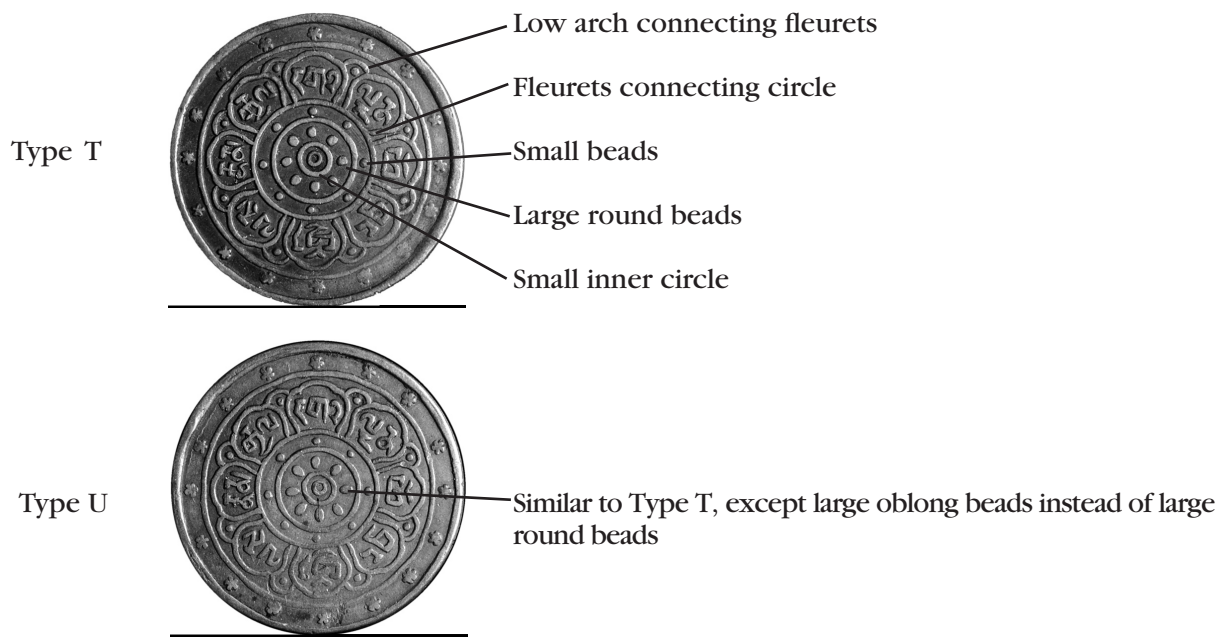
OBVERSE DETAILS

<u>Type</u>	<u>Description</u>
A	Normal script and details
B	Bottom right bead missing in inner square
C	Left two beads missing in inner square
D	Left scroll in south quadrant different

REVERSE DETAILS

<u>Type</u>	<u>Details</u>
-------------	----------------





II. COIN TYPES

Type	Obv	Rev	Remarks
I	A	R	Script different
IA	A	R	
II	A	S	
III	A	T	
IV	A	U	
V	B	S	
VI	C	S	
VII	D	S	

III. DETAILS OF COIN TYPES

Type I
Code T11.1
Mint: Dode
Denomination: 1/4 Sho-gang Yr. 1 (1909)
Diam: 25.8 mm; Th. 1.5 mm; Wt. 7.12 gms.
Metal: Copper, Plain Edge



Obverse: Type 'A'. A small square in the center with a bead in each upper corner contains the Norbu symbol. A large square surrounds the small square. The squares are connected at their corners by a line forming four quadrangles in which Tibetan script is inscribed. Outside the large square is a 20.0-mm diameter circle which forms four segments, each containing a rosette of seven beads and two scrolls. Between this circle and the rim are 16

stars. The Tibetan script reads the same as in the previous issue except in the South segment which reads:
= Sho-phydd; = 1/4 Sho-gang

Reverse: Type 'R'. Two very small circles in center surrounded by eight oblong beads, enclosed in a 6.5-mm diameter circle. Between the 3rd circle and the 4th circle (diam. 10.0 mm) are eight small beads. The eight separate fleurets with Tibetan script lies between the 4th and 5th circle (diam. 20.0 mm). A high arc with a bead connects the eight fleurets. Outside the 5th circle are 16 stars equidistant apart. The Tibetan script reads the same as the 1/8 Sho-gang coin.

Type IA
Code T11.1-2



Obverse: Same as T11.1. **Reverse:** Reverse different Script deviating

Type II
Code T11.2



Obverse: Type 'A' Similar T11.1. **Reverse:** Type 'S'

Type III
Code T11.3



Obverse: Type 'A' Similar to T11.1. **Reverse:** Type 'T'

Type IV
Code T11.4



Obverse: Type 'A' Similar to T11.1. **Reverse:** Type 'U'

Type V
Code T11.5



Obverse: Type 'B'. Reverse: Type 'S'



Type VI
Code T11.6



Obverse: Type 'C'. Reverse: Type 'S'



Type VII
Code T11.7



Obverse: Type 'D' . Reverse: Type 'S'



IV. SUMMARY DISTRIBUTION TABLE

Type	Code 'T'	No. Var.	No. Dup.	T.N.
I	11.1	1	2	3
IA	11.1-2	1	3	4
II	11.2	1	3	4
III	11.3	1	-	1
IV	11.4	1	-	1
V	11.5	1	1	2
VI	11.6	1	-	1
VII	11.7	1	-	1
	Total	8	9	17

%47

V. SUMMARY MEASUREMENT ANALYSIS

No. Coins	Diameter (mm)			Thickness (mm)		
	Sm.	Lg.	Avg.	Th.	Tk.	Avg.
17	25.8	26.3	26.0	1.2	2.0	1.73

VI. SUMMARY WEIGHT ANALYSIS

No. Coins	Low	Weight (gms)		s.d.m.	95% c.i. for mean
		High	Avg.		
17	7.68	9.31	8.27	0.54	7.19-9.35

A coin weighing 5.41 gms was not included in the above analysis.

VII. X-RAY MINI QUANTITATIVE ANALYSES

Code 'T'	Cu	Analyses (%)			Sn
		Zn	Fe	Pb	
11.1	96.4	-	.078	.612	.232
	95.9	-	.683	.196	
11.1-2	98.1	.463	-	.461	
	97.8	.636		.183	
	97.3	2.29		.423	
11.2	96.1	2.36		.231	
	96.3				.232
	94.3	3.81			
11.3	97.3	.828		.234	
11.4	-	-	-	-	-
11.5	96.8	1.18	.095		.132
	98.0	.798			
11.6	96.3		.069	.144	.184
11.7	95.7	2.00	.054	.811	.239

VIII. TABLE SHOWING COIN DETAILS

Type	Code 'T'	Var. No.	Rev. Die Axis	Diam. mm	Th. mm	Wt. gms.	Remarks
I	11.1	1.1	Due N	25.8	1.5	7.12	
IA		1-2	75°ccw	26.0	1.6	7.68	Reverse different
II	11.2	2.1	Due N	26.0	1.5	8.43	
III	11.3	3.1	Due N	26.0	2.0	8.65	
IV	11.4	4.1	60°ccw	26.0	2.0	9.01	
V	11.5	5.1	Due N	26.0	1.5	8.14	
VI	11.6	6.1	15°ccw	26.3	2.0	9.31	
VII	11.7	7.1	10°ccw	26.0	2.0	8.81	